



keep

Indianapolis

beautiful INC.

2022 PERENNIAL REPORT

My fellow Hoosier,

You are a friend, a volunteer, a supporter of Keep Indianapolis Beautiful. You have civic pride and a love for our city. You cringe when you see litter on the street or out-of-control honeysuckle choking the riverfront—and then you do something about it. You get together with new friends and old to knock on doors and chat about creating vibrant greenspaces in abandoned lots. You happily grab a shovel, a rake, or even a pickaxe to plant trees that will benefit future generations. You dig deep in your pockets and generously share your resources to ensure that the work that we started almost 50 years ago will continue for the next 50 years.



To all of you, for all you do to make Indy beautiful, we're grateful.

2022 was a good year for KIB. Our Adopt-A-Block Captains regularly cleaned up over 156 miles of city streets throughout the year, and with other neighborhood cleanups, we picked up 606,000 pounds of litter. That's the equivalent of 538 million cigarette butts *and* 11 million plastic water bottles *and* 6 million beer cans, combined! We planted over 3,400 trees, and when we had a long, dry summer, we watered trees an amazing 287,000 times. That's a lot of effort!

It's a difference we can see and experience every day. The city is a better place because of you.

Thank you for your support. Thank you for your partnership. Please read on to learn about the year's progress and consider helping us again this year (and in the years to come) to continue to make Indianapolis as beautiful as possible.



Jeremy Kranowitz
President & CEO





NO
DUMPING

STLE CA
Wilderness

Friends of Keep Indianapolis Beautiful,

What a wonderful year 2022 turned out to be here at KIB! It was a year marked by transition and growth, renewal and confirmation.

I'm exceedingly proud of the staff who expertly navigated the murky waters of the pandemic while being great stewards of our vision and mission. As we all transitioned out of the constraints placed on us, we found that you, our supporters and volunteers, were ready to get back to work in 2022. That exuberance for our mission created fertile ground from which to grow ... and boy, did we grow! We saw more interest in corporate days of service than we've ever seen! And volunteers flocked to our tree plantings, invasive plant removals, and greenspace projects.

While our partners could have used so many reasons to reduce support, instead they renewed their commitments. We are incredibly grateful for your dedication to our common vision to make Indianapolis a more healthy and vibrant community. Because you doubled down on your commitment, we were able to make significant progress on our programming and strategic plan, especially in creating more access to environmental benefits and by broadening neighborhood representation and awareness.

The end of 2022 marks the end of my tenure as Board Chair. I want to express my gratitude to the board; KIB's president, Jeremy Kranowitz; KIB staff; and all our partners, including the City of Indianapolis and Citizens Energy Group. It has been a great honor to serve on the board and witness this organization's passion to help people and nature thrive in Indianapolis. KIB's willingness to continually assess how we can do more for our community makes my heart happy, and I look forward to volunteering for years to come. So, I will see you around the neighborhood.



Shelby Swango
Chair, KIB Board of Directors
Senior Vice President, WSP USA

TABLE OF CONTENTS

STRATEGIC DIRECTION	07
UNIVERSITY RESEARCH	08
NOTABLE COLLABORATIONS	09
PROGRAM REPORTS	12
FINANCIAL YEAR IN REVIEW:	19
KIB BOARD	20
KIB STAFF	21
2022 DONORS	23



STRATEGIC DIRECTION

We are halfway through our 2021–2024 strategic plan, which has three ambitious goals:

- 1. Equitably Improve Access to Environmental Benefits so People Can Thrive in Nature:**
We used data and analytic tools to focus many of our resources on 10 neighborhoods that have the highest need for more environmental benefits, and we are successfully collaborating with neighbors to make those places cleaner, greener, safer, and healthier. We have made significant progress in Riverside Park to create new visual and physical access points to the waterway, benefiting the neighborhood and key ecosystems.
- 2. Broaden Neighborhood Representation and Awareness to Address Community-Driven Needs:** KIB is holding Town Hall meetings and creating Community Advisory Committees so neighbors can help direct our work to where it is most wanted and needed. The Advisory Committees are an invited group of residents, stakeholders, and organizations that have a vested interest in their communities. They represent seven sectors of the city (northwest, north, west, central east, far east, southwest, and south), and they meet with KIB four to six times per year.
- 3. Improve Long-Term Financial Sustainability to Allow for Equitable Allocation of KIB Resources:** We are building our reserves, and we are proud to report that we are rated “Platinum” by GuideStar and “4 Stars” by Charity Navigator, the two major nonprofit ratings agencies for measuring nonprofit fiscal responsibility, transparency, and effectiveness.

UNIVERSITY RESEARCH

HOW DO I KNOW IF LEAD IS HIGH WHERE I LIVE?

You can ask folks at IUPUI to test the soil.
You can see on the map: iupui-earth-science.shinyapps.io/MME_Indy/

● Safe ● Use caution ● Unsafe for gardening ● Unsafe for outdoor play

THE PROBLEM

Even low levels of lead in the blood of children can result in:

- Behavior & learning problems
- Permanent decreases in intelligence
- Slowed growth
- Hearing problems
- Anemia
- Kidney damage

If lead is too high, it may not be safe to garden directly in the soil or even to play outdoors!

WHY KEEP INDIANAPOLIS BEAUTIFUL?

KIB GreenSpaces turn vacant lots into vibrant community gathering spaces.

We add new protective layers when we install:

- Trees and mulch
- Raised vegetable beds
- Nature play areas
- Native plants
- Walking paths
- Shelters

This lowers the availability of lead in the surface soil!

REDUCING LEAD EXPOSURE

Did you know that lead in soil is a greater threat to health than lead pipes? KIB and researchers at IUPUI studied whether the creation of a new GreenSpace on a formerly vacant lot could reduce the amount of lead exposure from surface soils. Adding new walking paths, new plant materials and trees, and layers of mulch created new barriers of protection, confirming our hypothesis. IUPUI is expanding its research on this exciting outcome.

NOTABLE COLLABORATIONS

CITY OF INDIANAPOLIS/DEPARTMENT OF PUBLIC WORKS

For decades, Indianapolis city leaders have valued the link between their goals for how Indianapolis looks and feels and KIB's mission to help people and nature thrive. Based on those shared goals, KIB receives funding from the City of Indianapolis, directed through the Department of Public Works (DPW), to assist with creating and maintaining green infrastructure (such as trees planted along a street). The city also supports KIB programming by providing trash disposal resources, collaborating on habitat restoration, and helping plant thousands of trees. In December, the city renewed its contract with KIB for 2023–2024 for litter abatement, green infrastructure, public awareness and outreach, youth engagement, and public gateway monitoring and maintenance.

LILLY ENDOWMENT AND KEYS2WORK

We were delighted and honored to receive a transformational award of \$3.78 million from the Lilly Endowment to reduce litter in Indianapolis through 2025. The project will focus on harder-to-clean areas such as busy roads and waterways like the White River. Thanks to this support, we prepared to launch a new partnership with Keys2Work. Crews from Keys2Work will use special equipment to safely pick up litter on 20 busy thoroughfares that would be unsafe for general volunteer cleanups. Key roadways include 38th Street, Raymond Street, Central Avenue, and Capitol Avenue, among others.

CORPORATE PARTNERS

KIB partnered with more than 90 companies that provided financial or in-kind support. They brought 2,233 volunteers for 38 custom days of service and tens of thousands of dollars in in-kind donations. As pandemic restrictions ended, companies were eager to resume safe, impactful, and outdoor volunteer days to reconnect among staff as well as with the greater Indianapolis community. Shiel Sexton brought 85 employees to construct large shelters and fences at the Far Eastside Orchard GreenSpace, and 17 people from Buckingham Companies constructed a Noah's Ark playset at the new Mapleton Park GreenSpace. Dozens of companies planted trees. About 925 volunteers from Eli Lilly & Company joined us on the Lilly Global Day of Service to paint murals, plant trees, remove invasives, mulch playgrounds, and pick up litter.

From 4 volunteers to nearly 1,000, the following partners joined KIB in custom days of service: Accenture • Allied Solutions • Altria/Points of Light • Amazon • Aptiv • Arbor Homes • Barrett Stokely • BSA LifeStructures • Buckingham Companies • Carrier • Caterpillar • Corteva/FFA • Cummins • Dauby O'Connor & Zaleski • Deloitte • Delta Faucet • Eli Lilly & Co. • FedEx • Glick Philanthropies • Ice Miller • Indiana Farm Bureau Insurance • International Paper • IU Health • Milliman • NextGear Capital • Ren • Rotary Club of Indianapolis • Salesforce • Shiel Sexton • Shrewsberry & Associates • Superior Construction • TWG Development • UPS • Verizon • Walker Information • Zeller



OUR BOTTLES ARE MADE WITH RECYCLED PLASTIC

THE GREAT INDIAN CLEANUP

THE GREAT INDIAN CLEANUP

Coca-Cola



PROGRAM REPORT: BEAUTIFICATION AND ANTI-LITTER

GREAT INDY CLEANUP

KIB connected with community groups throughout Indianapolis to hold 233 Great Indy Cleanups (GICs). An estimated 3,769 volunteers participated in cleanup projects this year. They collected more than 605,720 pounds of litter, which was disposed of at the South Side Landfill.

ADOPT-A-BLOCK

Every two years, we ask our Adopt-A-Block Captains to renew their commitment. In 2022, one year into this cycle, a total of 621 Block Captains renewed their block or signed up for the first time to keep their streets clean and litter-free, spanning a total of 156.4 miles of Indianapolis streets.

ADOPT-A-BLOCK BUSINESS

We re-launched our Adopt-A-Block Business program to focus outreach efforts on businesses and schools, hoping to activate the business community to adopt their blocks. We even got a cute little electric car that you might see driving around the city. The front reads, "Keep It Clean, Indy."

THOROUGHFARE LITTER REMOVAL

We prepared to launch our new litter removal program partnership with Keys2Work, which will target busy roads that are difficult to keep clean.

PROGRAM REPORT: GREENING PROGRAMS

AES INDIANA PROJECT GREENSPACE

KIB's AES Indiana Project GreenSpace program was created to transform vacant lots and underused spaces into natural, beautiful, and functional pocket parks. We join neighborhood groups and organizations all over Marion County to co-create green infrastructure in places where it can help strengthen community bonds and sense of identity. These GreenSpaces are community-created and neighbor-maintained, and open for the public to enjoy the beauty of native landscapes. 2022 projects included three new GreenSpaces: Keystone Monon, Constitution Gardens, and Mapleton-Fall Creek; joining a network of over 50 others across Indy.

HABITAT RESTORATION

KIB works with volunteers, with contractors, and independently to manage invasive plant species and steward native habitat on public land throughout the city. Much of this work focuses on riparian corridors (along rivers and streams), but it also includes work in parks. We managed invasive species at eight sites, did new/expanded invasive removal at three sites, and cared for native plantings at Christian Park and at 30th and Fall Creek.





PROGRAM REPORT: GREENING PROGRAMS

COMMUNITY FORESTRY

KIB's forestry program takes a community-based approach to plant thousands of trees. KIB accepts applications from neighborhoods and residents from all over the city, and with robust efforts from KIB's Community Engagement team, we ensure that neighbors are aware and approve of the trees being planted on their streets.

In 2022, we planted 3,423 trees—over 95% of them native to Indiana and mostly large shade trees. Those trees are along streets in historically underserved locations, in neighborhoods and parks, and in strategic locations to reduce flooding.

LEARNING BEST PRACTICES IN TREE PLANTING

At each volunteer event, KIB's Certified Arborists demonstrate how to plant a tree so it has the best chances for long-term survival—from digging holes and preparing root balls to straightening trunks and mulching correctly.

For people who want to know more, KIB trains Tree Tenders, volunteers with special knowledge of planting, pruning, and other tree care. They help KIB with tree deliveries, provide quality control at plantings, and structurally prune trees so they remain strong as they grow, whatever storms may come. Repeat volunteers earn perks such as tree ID books, KIB logo gear, and tools like soil knives and pruners. We even have a Spanish-language version of the program, ÁrboAmigos.

PROGRAM REPORT: YOUTH PROGRAMS

YOUTH TREE TEAM (HIGH SCHOOL & EARLY COLLEGE)

The 2022 Youth Tree Team (YTT) included 28 teens and 9 young adult Leaders who helped maintain thousands of KIB-planted trees throughout Indianapolis. Youth watered trees two days per week, mulched trees one day per week, and enjoyed weekly enrichment programming that focused on developing social, spiritual, environmental, physical, emotional, occupational, and intellectual wellness.

URBAN NATURALISTS (UNDERGRADUATE COLLEGE)

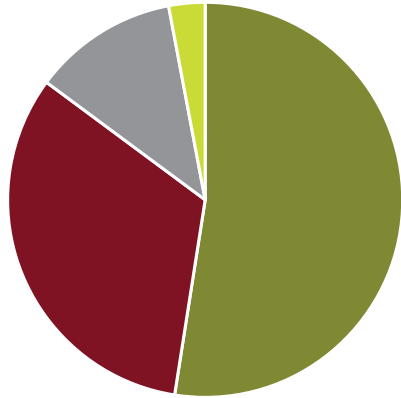
Our Urban Naturalist (UN) program is a paid internship for college students or recent graduates who are interested in environmental careers. 2022's UN team led over 725 corporate and public volunteers in removing invasive plants and planting native perennials. UNs prevented invasive honeysuckle and purple wintercreeper from returning on more than 30 acres at Pleasant Run, Brookside Park, Riverside Park, and Fall Creek Parkway.

“THIS WAS THE BEST INTERNSHIP I HAVE HAD—I HAVE NEVER LOVED A JOB LIKE THIS ONE, AND NO INTERNSHIP HAS HAD SUCH A POSITIVE IMPACT ON MY CAREER DEVELOPMENT BEFORE. THANK YOU!”

—2022 URBAN NATURALIST



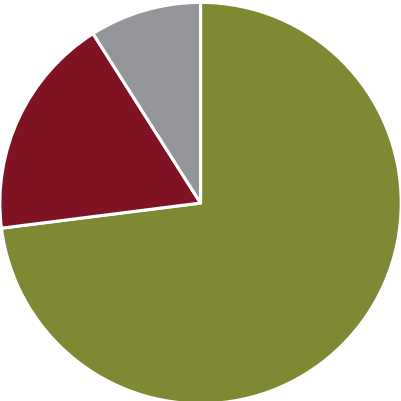
YEAR IN REVIEW: FINANCIALS



SOURCE OF FUNDS

Contract Revenue	\$2,459,873	■
Grants & Contributions	\$ 1,521,255	■
Net Assets Released from Donor Restrictions	\$ 558,629	■
Other	\$120,486	■

TOTAL **\$4,660,243**



USE OF FUNDS

Program Services	\$3,215,983	■
Management/General	\$792,981	■
Fundraising	\$396,490	■

TOTAL **\$4,405,454**

KIB BOARD



Shelby Swango
Chair
WSP USA



Justin Sufan
Vice Chair
AES Indiana



Becky Quintana
Treasurer
Somerset CPAs and
Advisors



Chris Tucker
Secretary
Cummins, Inc.



David Feinberg
Immediate Past Chair
Crowe LLP



Nora Hiatt
Development
Committee Chair
Community Member



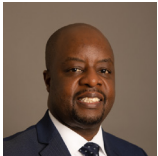
Kathy Laderach
Board Member at Large
DEIB Committee Chair
Laderach Consulting



Maithilee Das
Greeley and Hansen



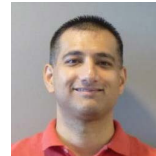
Inez Evans
IndyGo



Shadreck Kamwendo
IU Health



Will Lyon
American
Structurepoint



Kal Mehta
Capital Group



John Moriarty
Plews Shadley
Racher & Braun



Ramon Morrison
Meticulous Design +
Architecture



Stephanie Powers
Community Advocate



Katie Robinson
Electrification
Coalition



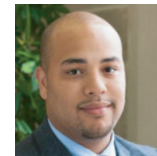
David Starr
Roche Diagnostics



Katie Vrabel
Buckingham Companies



Charlie Wiles
Center for Interfaith
Cooperation



Nickolas Williams
Crossroads Education

KIB STAFF



Mark Adler
VP of Operations



Kodi Akins
Controller



Rebecca Berry
Director of Community
Engagement



Hayley Brayer
Development
Coordinator



Iasia Cheers
Neighborhood Engagement
Program Manager



Keily Conchas
Litter Volunteer
Coordinator



Kelly Cook
GreenSpace Program
Manager



Henry Cox
Community Forestry
Manager



Isa Crain
Community Arborist



Ryann Davis
Manager of Clean
Neighborhoods, Residential



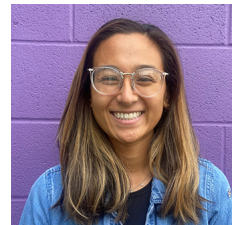
Abbie Downs
Youth Tree Team
Coordinator



Miranda Frausto
Volunteer Program
Manager



Ciera Gatling
Volunteer Coordinator



Mads Gullion
Waterway Community
Engagement Coordinator



Nicky Hornyak
Manager of Clean
Neighborhoods, Commercial



Summer Keown
Director of
Clean Neighborhoods



Jeremy Kranowitz
President & CEO



Shirley Manners
Office/HR Administrator



Ethan Olson
Senior Director of
Native Landscapes



Kelly Owens
HR Director



LaTonya Plummer
Office Assistant



Birdie Ratliff
Urban Naturalist
Coordinator



Danielle Ridgway
Grants Manager



Adam Schmutte
Director of Urban
Ecology



Karl Selm
Geographic Information
System Analyst



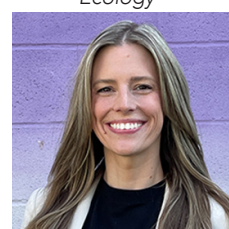
Kristina Uland
Chief Operating Officer



Ben Valentine
Director of Development



Katie Waters
GreenSpace Sustainability
Program Coordinator



Carly Weidman
VP of Stakeholder
Engagement



Taylor Zakrzewski
Marketing, Design,
& Content Coordinator

2022 DONORS

* KIB Board
** KIB Staff

\$250,000+

Lilly Endowment

\$100,000–\$249,999

AES Indiana
Efroymson Family Fund
Eli Lilly and Company Foundation

\$50,000–\$99,999

Capital Group
Dorsey Foundation
JD Finish Line Foundation
Herbert Simon Family Foundation
International Paper
Nina Mason Pulliam Charitable Trust

\$20,000–\$49,999

Bank of America
David and Christine Becker
Meg Coyle
Grifols
Ice Miller, LLC
Indianapolis Colts
Lacy Foundation
One Tree Planted
Pacers Sports & Entertainment
PNC Bank
The Indianapolis Foundation, a CICF affiliate

\$10,000–\$19,999

Accent Indy, A DMC Company
Arbor Day Foundation
Big Car Media
CareSource
Corteva

Deloitte
GEICO
Granite Inliner Solutions, LLC
Nora and Tom Hiatt*
Indiana Department of Transportation
Kroger
NextGear Capital
Republic Services of Indiana
Shiel Sexton Company
Mike and Sue Smith
The Orchard School
Verizon

\$5,000–\$9,999

Accenture
Coca-Cola Bottling Company
Community Alliance of the Far Eastside
Griffith Family Foundation
Lisa and Rick Hurst
Indiana University
Indiana University Health
Marion County Commission on Youth
Metropolitan Indianapolis Board of Realtors
Mightycause Foundation
Plews Shadley Racher & Braun
Points of Light
Rotary Club of Indianapolis
Salesforce
Ann Morris Stack
Edgar Stoesz
Sullivan Hardware
The Brave Heart Foundation
Jeff and Benita Thomasson

\$2,500–\$4,999

Allied Solutions
Arbor Homes
Barrett and Stokely
BSA LifeStructures
Carrier Corporation
David and Marta Carter
CHA Consulting
Community Greenspace - Legacy Fund, a fund of
The Indianapolis Foundation
William and Laura Cummings
Cummins
Dauby O'Connor Zaleski – DOZ Charitable Foundation
Delta Faucet Company
Endangered Species Chocolate
Inez Evans*
David Feinberg and Maureen Keller*
Gannett Foundation
Glick Philanthropies
HNTB Corporation
Tom Hulvershorn
KeyBank
Jeremy Kranowitz and Jennifer Pleasure**
Peter and Jill Lacy
Abby McGill
Milliman
John Moriarty*
Bud Myers
Nicholas H. Noyes Jr. Memorial Foundation
Ren
Jeffrey Sandoe
Phil G. D. Schaefer
Shewsbury & Associates, LLC
The Sikh Coalition
Bruce and Marcia Sklare

2022 DONORS

* KIB Board
** KIB Staff

Linda Smith
David and Lori Starr*
Superior Construction
Shelby and Steve Swango*
The Herman and Goldie Halpin Foundation
TWG Development
Joseph and Diane Vande Bosche
Vision Event Management, LLC
Walker Information
WSP
Zeller

\$1,000–\$2,499

Mark Adler**
Allen Whitehill Clowes Charitable Foundation
AmazonSmile Foundation
Amos Butler Audubon Society
Don, Jr. and Terri Gill Arbogast
Jill Beavins
Anna-Mae Beswick
Heather Bowers-Deneef
Maithilee Das*
Eli Lilly and Company
Facebook
Elizabeth and Fred Frick
Becky Fromm-Quintana and Charlie Quintana*
Genentech
Tim George
Gregory & Appel Insurance
Deanne and Gregory Heidrich
Charles and Asrah Heintzelman
Indianapolis Motor Speedway
John Krauss and Marnie Maxwell
Kathy and Todd Laderach*
LandWorx Engineering

Katie Lineweaver Robinson*
Tim and Marjorie Maginn
Cornelius Martin and Katharine Marvel
Kal Mehta*
Ramon and Judith Morrison*
Elsie and Chris Palabrica
Tina Pasquinelli
Stephanie and Mamon Powers*
Myrta Pulliam
Roche Diagnostics Corporation
Lucas Rosbottom
Bonnie Sattler
Dana Sherwood
Loren and Morgan Snyder
Starbucks Foundation: Neighborhood Grants Fund
Justin Sufan*
Michael and Maureen Surak
T&H Realty Services
The Dr. Lawrence M. and Eldoris J. Borst Family
Fund, a fund of CICF
Christopher Tucker*
Kristina Uland**
United Way of Central Indiana
Estella Vandeventer
Katie Vrabel*
Charlie and Sachiko Wiles*
Kathy Willing
Christopher and Molly Wilson

\$500–\$999

Mike Bensi
Buckingham Companies
Buckingham Foundation
Jeff and Ellen Butz
Mark Demery

Michael Drascic
Eli Lilly and Company PAC
Leigh Riley Evans
Kurt Fetzer
Tatiana Foroud and Eric Boes
Indra and Mark Frank
GadellNet Consulting Services
Will Gardner and Katie Feary-Gardner
Geosyntec Consultants - Pittsburgh Office
Marianne Glick and Mike Woods
boB and Cindy Henning
Kyle and MaryBeth Jackson
Joe and Emily Jarzen
Timothy Jarzombek and Jenna Slesinski-Jarzombek
Katie Smith Gift Fund
Alan and Anne Kimbell
James Kincannon and Charles Goad
Sarah and Howard Knight
Sara and Jim Lootens
Jeff and Kimberly Mader
Marigold Clothing
Pat Foxworthy and Steve Mason
Christopher Moore
Rahnae and Jay Napoleon
Larry and Rhonda Peffer
Byron and Marsha Robinson
Todd Sallee
William Scott
Tim Shaffer and David Hobson
Renee Smith
Tracy Smith
Catherine Snyder
Ruth Soper
Francine Stonehouse
UHG United HealthGroup
Meagan Vanderpool

2022 DONORS

Amanda Ward
Nick and Brandi Williams*
Margaret and Barry Wood
Douglas and Pamela Wray

\$250-\$499

Michael and Lisa Almert
Susan Arford
Leslie Arihood
Holiday Banta
Cody Barron
Larry and Lisa Beiter
Daniel Bookheim
Brebeuf Jesuit Preparatory School
Jake Budler and Julia Brenkey
Natalie Catton
John and Barb Chirgwin
C. Russell and Mary Lou Cox
Casey and Betsy Cronin
Brian Cusimano
Thomas and Marcia Desmond
William Ditzler
Margaret Drew and Craig Pinkus
Mychal and Emily Eagleson
Michael Flis and Jane Pajor
Phillip Goldberg
Meredith and Mark Gramelspacher
Karen Grant
Derek Gray
Growth Heroes
Cari Guichelaar
William Hallberg
John Harper
Eric Hart
Larry Haworth

Nadia and Daniel Hayford
Alex Hiatt
Julia Hogan
Jane Houck
Evelyn Jones
Aaron Kalinowski
Thomas and Shellee Klausmeier
Kevin Krulewicz
Mike and Caroline Langellier
Ryan and Melissa Larcom
Deborah Law
Liberty Mutual
Eleanor and Carlos Lopez
Edward McLane and Rosa Harris-McLane
Microsoft
Monica Moran
Jim and Jacqueline Morris
Sharon Murphy
Neutron Holdings, Inc. DBA Lime
Janet and Robert Newland
OnBoard Meetings
Neha Patel
Catherine and David Patterson
James Pickering
LaTonya Plummer**
Raytheon Technologies Corporation
Danielle Ridgway**
Ellen Robinson
Karl Selm**
Kaye Smith
Brandon Spitz
Chad Starns and Crystal Grave
Sarah Stelzner and David Ingram
Clayre Tanis-Arens
The Science and Magic Corporation of America, LLC.
Total Quality Logistics

Ben Valentine**
Douglas Walker
Jack and Julia Wickes
Andy Wilkinson
Willo Labs
Jamie Wilson
John Winter
Andrew Wood
Carolyn and Calvin Yong

IN-KIND GIFTS

Buckingham Foundation
Kerr (David) Household
Somerset CPAs, P.C.
Sunbelt Rentals
Target Corporation

2022 DONORS

* KIB Board
** KIB Staff

GIFTS WERE MADE IN HONOR OF THE FOLLOWING INDIVIDUALS:

Blake Brady
Maithilee Das & Rob Lappin*
Nora & Tom Hiatt*
Hoosier Homeless & Hungry
Elizabeth Kucer
Clayton D. & Margaret P. Morrison
Ed Shaurette
Joe Witkowski

GIFTS WERE MADE IN MEMORY OF THE FOLLOWING INDIVIDUALS:

FedEx employees who lost their lives on April 15, 2021
Gayle Lightner
Ted and Marilyn Lorange
Orville L. McKinney
Margret Mohr
Judi Pearson
John Michael van de Bossche



keep
Indianapolis
beautiful ^{INC.}

WHO WE ARE

Keep Indianapolis Beautiful, Inc. is a nonprofit organization with a mission to engage diverse communities to create vibrant public places, helping people and nature thrive. Annually, KIB works with thousands of volunteers on hundreds of community projects across Marion County.

WHAT WE DO

We're the ones who smile when planting trees in the rain, who laugh with friends as we pick trash off our neighborhood streets, and who care very deeply about the health, happiness, and greenness of our city. We see a beautiful place to call home—one that is loved and cared for by the community and is ecologically rich with plants, trees, and pollinators.

How do we do it? We plant trees, create green spaces, engage students in nature, restore urban habitat, and pick up litter with the help of volunteers and donors like you.